

**INSTRUCTIONS FOR INSTALLING A WASTE PAIL OVERFLOW SWITCH REPLACEMENT
KIT IN A NATIONAL VENDORS®, CROWN SEVENTY TWO®, SERIES OR GOLDEN
FURNITURE LINE HBM-72 HOT BEVERAGE MERCHANDISER; OR, CROWN SEVENTY TWO,
SERIES OR GOLDEN FURNITURE LINE HBM-72Q RESERVOIR HOT BEVERAGE MERCHANDISER;
OR CROWN SEVENTY TWO, SERIES OR GOLDEN FURNITURE LINE CDM-72 OR CDM-72A
COLD DRINK MERCHANDISER**

These instructions cover the replacement procedures for the Waste Pail Overflow Switch replacement in any Crown Seventy Two, Series or Golden Furniture Line HBM-72 Hot Beverage Merchandiser; or, Crown Seventy Two, Series or Golden Furniture Line HBM-72Q Reservoir Hot Beverage Merchandiser; or, Crown Seventy Two, Series or Golden Furniture Line CDM-72 or CDM-72A Cold Drink Merchandiser.

Read these instructions carefully and thoroughly before proceeding with the actual removal and replacement procedures. Retain the instructions for part number and replacement information. Kit 311-6143 contains the following parts:

Part Number	Description	Quantity
311-6130	Overflow Switch Assembly	1
311-6126	Overflow Switch Cover	1
311-8050	Harness Adapter	1
404-1117	Grommet Strip	1(a)
404-7057	No.8 x 3/8 PHS W/LW Sheet	
	Metal Screw	3
9900-046	No.8-32 x 1/4 RHS S/T Screw	2
311-6144	Warning Tag	1(c)
311-6145	Drill Depth Gage	1(c)
611-8130	Drilling Template - HBM-611 and HBM-612	1(a)
610-8359	Adapter Plate - HBM-610	1(b)
310-4122	5/16-18 x 1/2 Hex Head Screw W/Lockwasher	1(b)
117-1022	5/16-18 KEPS Conical Serrated Washer Nut	1(b)
230-2054	No.8-32 x 5/16 PHS Screws	3(b)
9900-081	No.8-32 Nuts W/Lockwasher	3(b)
311-6146	Installation Instructions	1
	* * *	

Legend of Symbols:

- (a) Used only on HBM-611, HBM-612.
- (b) Used only on HBM-610.
- (c) Used only on CDM-72 and CDM-72A.

Tools Required:

- 1 1/4-Inch Electric Drill
- 1 No.29 Drill Bit
- 1 Centerpunch
- 1 Hammer
- 1 Screwdriver

TO INSTALL THE KIT

A. REMOVAL OF THE OVERFLOW SWITCH AND TUBE ASSEMBLY.

1. Open the Merchandiser Cabinet Door.
2. Place the Main Switch in the OFF Position.
3. Remove the Cup Delivery Compartment and Chute Assembly.
4. Remove the Overflow Switch Cover Assembly and disconnect the two electrical wiring harness leads from the Overflow Switch. See Figure 1 and 2.
5. Remove the Overflow Switch Cover Assembly from the electrical wiring harness. See Figure 2.
6. Remove the Hose Clamp, which attaches the Tube Assembly to the base of the Overflow Switch; separate the Tube Assembly from the Switch and remove both parts from the Cabinet. See Figure 2.
7. In the Cold Drink Merchandiser, remove two Screws and the Overflow Switch Mounting Bracket. See View C, Figure 1.

B. TO INSTALL THE OVERFLOW SWITCH REPLACEMENT KIT IN A HBM-611 AND HBM-612.

1. Wipe the surface of any dust, oil or water, where the replacement Switch is to be installed. See Figure 1 and 3.
2. Peel about one inch of backing from the starting end of the Drill Template, Part Number 611-8130, included in the Kit, and press the starting end on the side of the Cup Delivery Horn Assembly. See Figure 1 and 3.
3. Remove the remainder of the backing and carefully press the Template into place. Be sure to keep edge of the Template even with edge of the flange. See Figure 3.
4. Centerpunch two places shown on Template. See Figure 3.

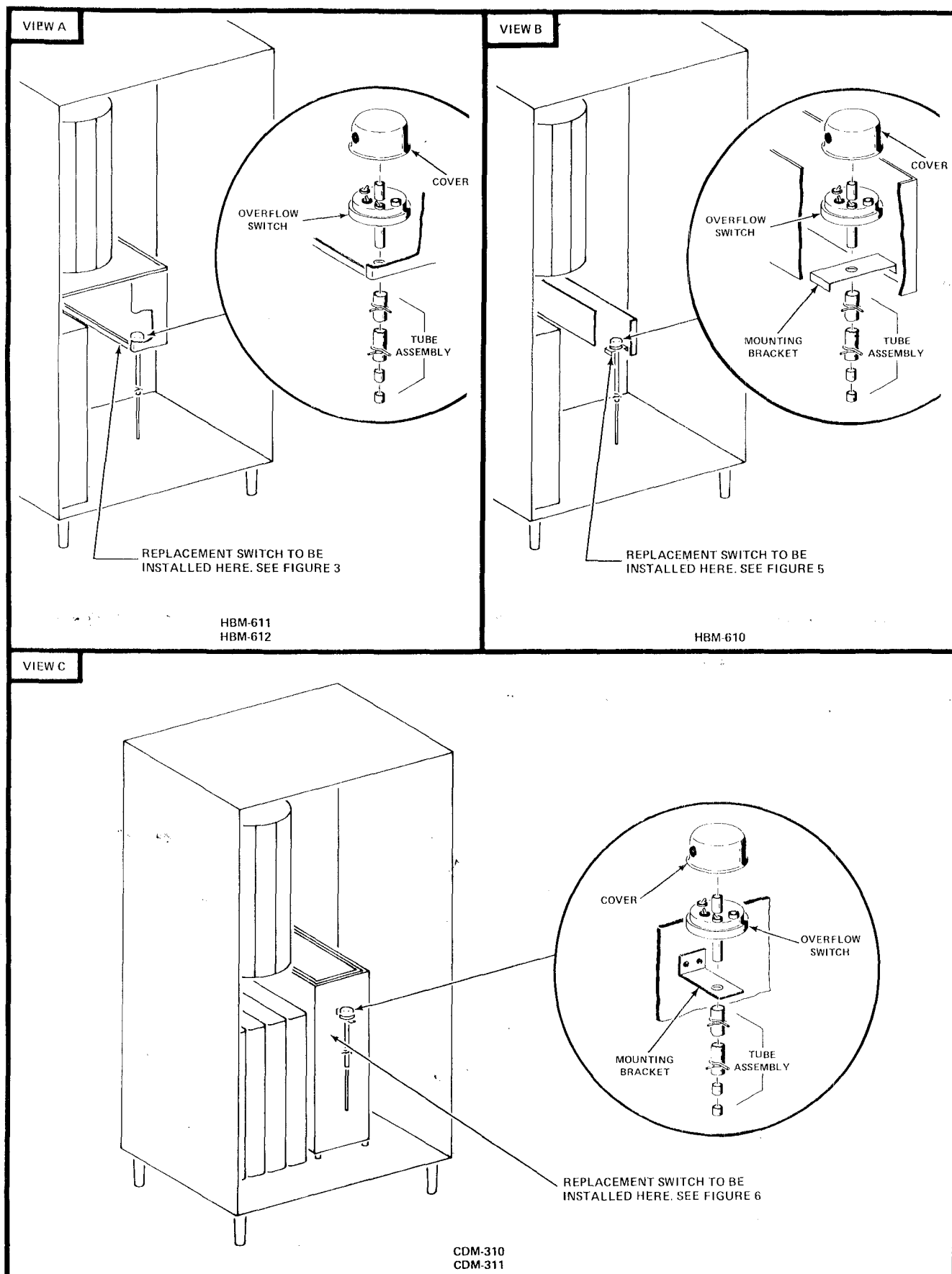


FIGURE 1

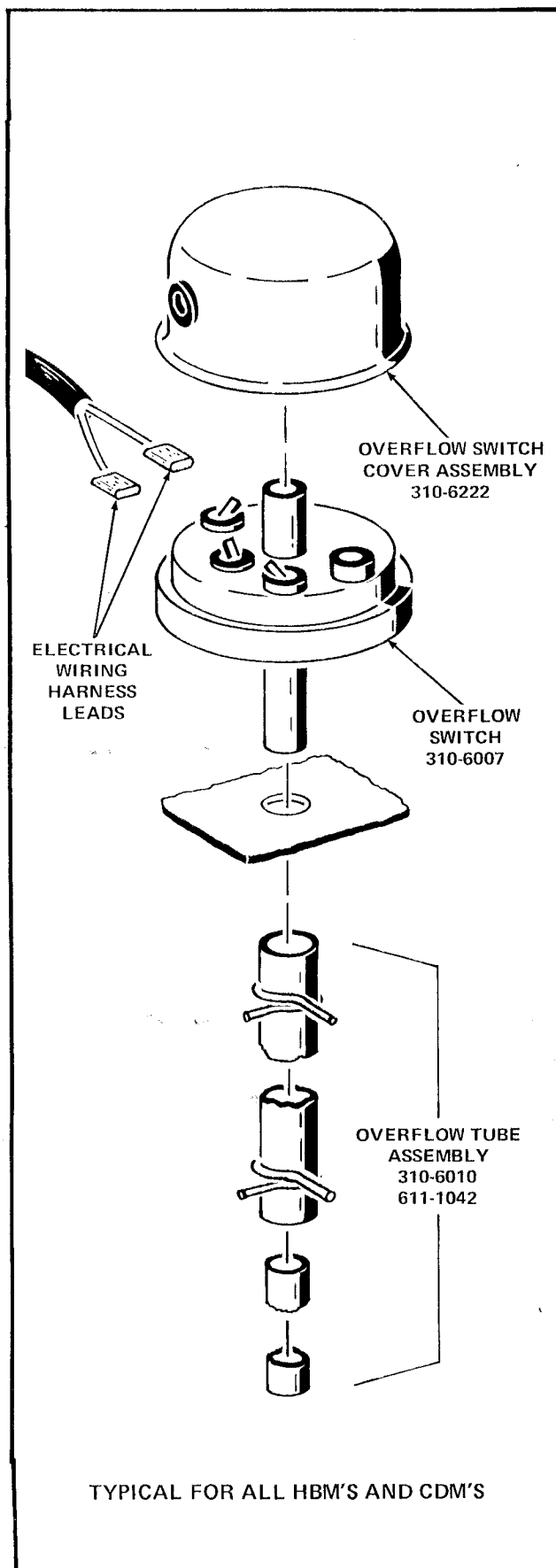


FIGURE 2

5. Drill holes through two centerpunch marks, using No.29 Drill bit.
6. Peel off and remove the drill Template.
7. Connect the 3-Circuit Switch Receptacle end of the Harness Adapter, Part Number 311-8050, included in the Kit, to the prongs of the Lever Switch on the Overflow Switch Assembly, Part Number 311-6130, included in the Kit. See Figure 4.
8. Install the Overflow Switch Cover, Part Number 311-6126, included in the Kit, on the Overflow Switch Assembly with two No.8-32 x 1/4 RHS S/T Screws, Part Number 9900-046, included in the Kit. See Figure 4.
9. Position the Overflow Switch Assembly, as shown in Figure 3, and attach to the flange of the Cup Delivery Horn Assembly using two No.8 x 3/8 PHS W/LW Sheet Metal Screws, Part Number 404-7057, included in the Kit.
10. Install the 2-3/16 inch Grommet Strip, Part Number 404-1117, included in the Kit, on the flange just to rear of the installed Bracket. See Figure 3.
11. Connect the two Terminal leads on the Harness Adapter, to the two electrical wiring harness leads, earlier removed from the old Overflow Switch, and dress the Harness over the Grommet Strip.
12. Be sure the Overflow Switch Chain and Float hang freely, and that the Float hangs inside the Waste Pail.
13. Place the Main Switch in the ON Position.
14. Lift the Overflow Switch Float, a click should be heard from the Overflow Switch, and the SOLD OUT sign should be lighted.
15. Lower the Overflow Switch Float to hang inside the Waste Pail and observe that the SOLD OUT sign light should be OFF.
16. Close the Cabinet Door.
17. Test vend the Merchandiser.

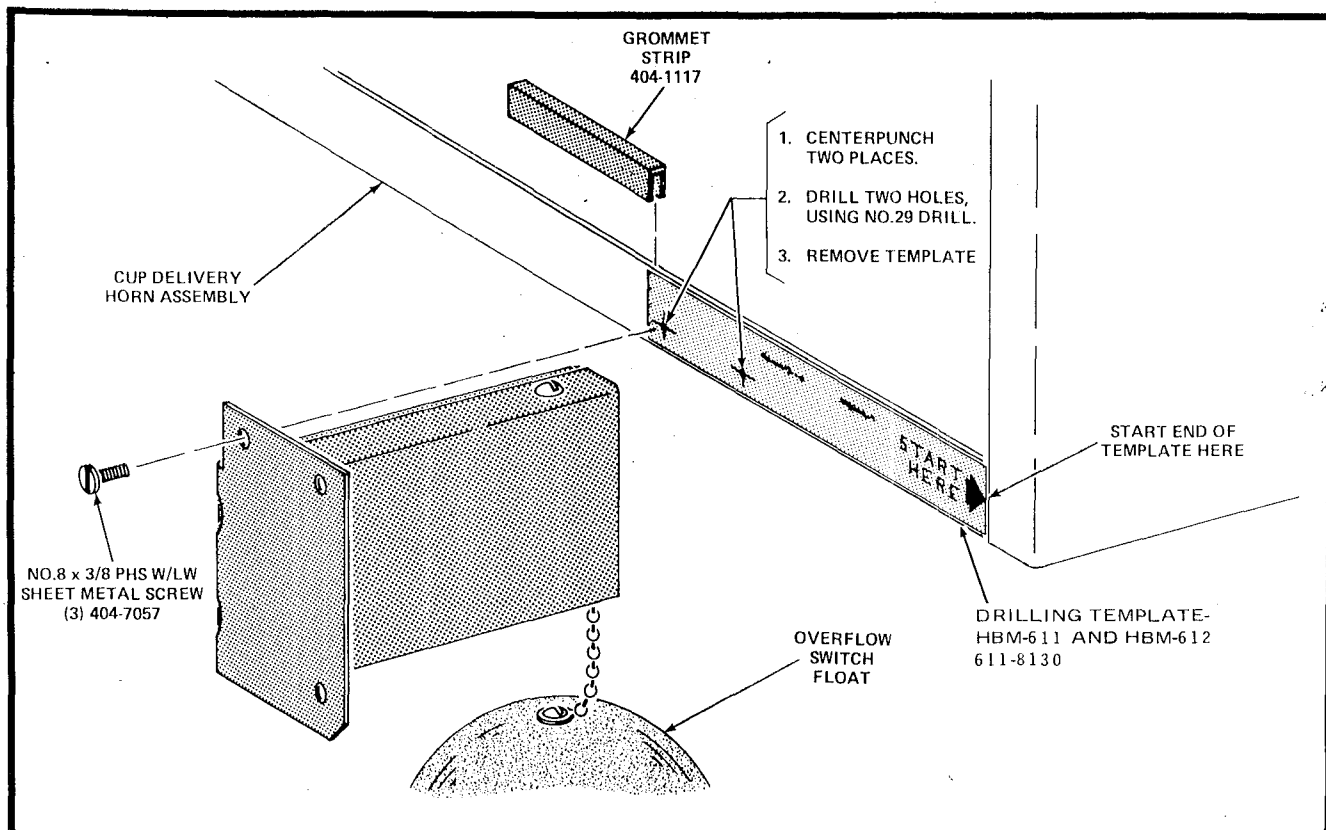


FIGURE 3

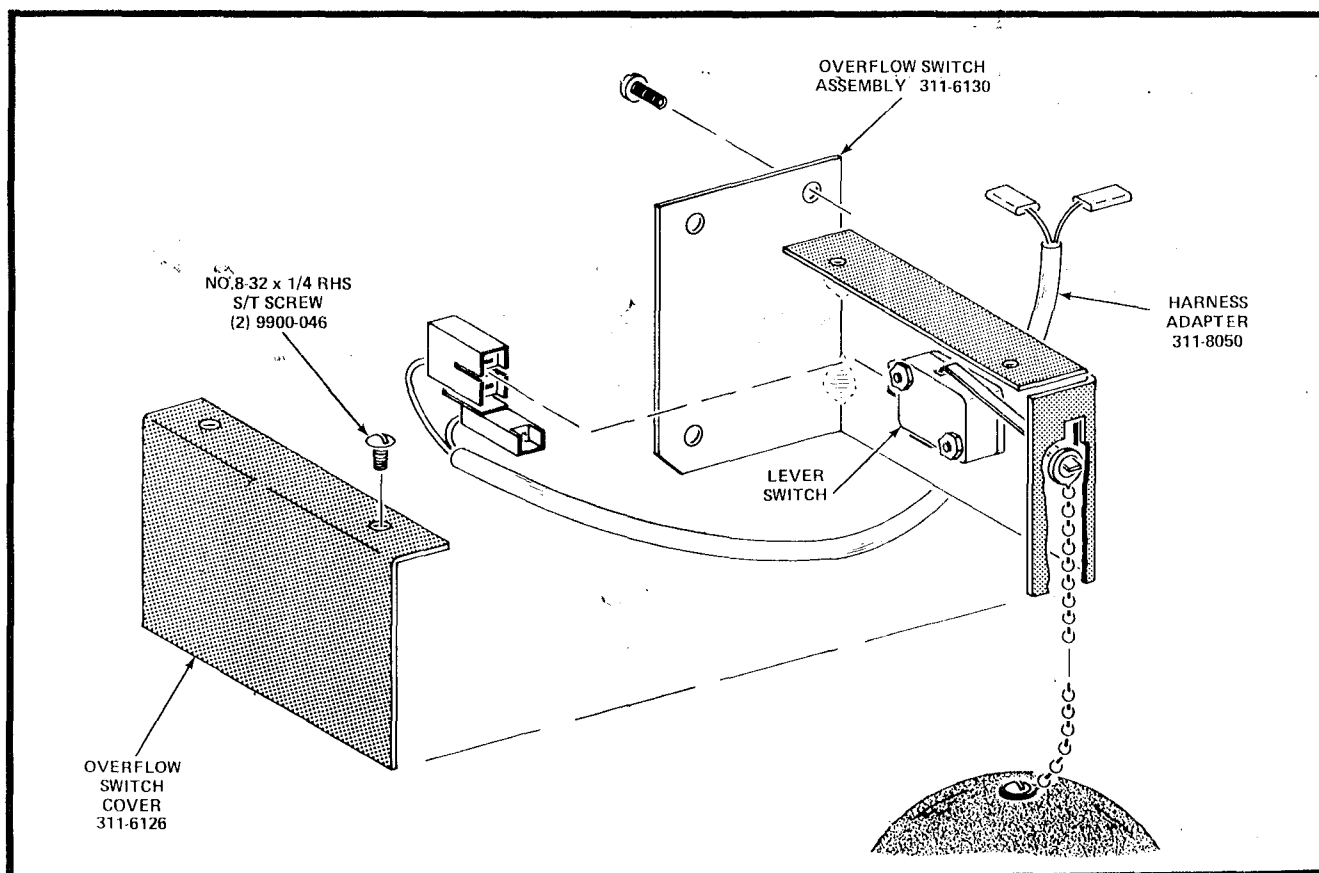


FIGURE 4

C. TO INSTALL THE OVERFLOW SWITCH REPLACEMENT KIT IN AN HBM-610.

1. Position the large hole in the end of the Adapter Plate, Part Number 610-8359, included in the Kit, over the hole in the bracket, behind the front of the Cup Delivery Compartment Mounting Bracket. See Figure 5.
2. Attach the two brackets together, using the 5/16-18 x 1/2" Hex Head Screw W/Lockwasher, Part Number 310-4122, and the 5/16-18 KEPS Conical Serrated Washer Nut, Part Number 117-1022, both included in the Kit. See Figure 5.
3. Connect the 3-Circuit Switch Receptacle end of the Harness Adapter, Part Number 311-8050, included in the Kit, to the prongs of the Lever Switch on the Overflow Switch Assembly, Part Number 311-6130, included in the Kit. See Figure 4.
4. Install the Overflow Switch Cover, Part Number 311-6126, included in the Kit, on the Overflow Switch Assembly with two No.8-32 x 1/4 RHS S/T Screws, Part Number 9900-046, included in the Kit. See Figure 4.
5. Position the Overflow Switch Assembly, as shown in Figure 5, and attach to the rear of the Overflow Switch Adapter Plate, using three No.8-32 x 5/16 PHS Screws, Part Number 230-2054, and three No.8-32 Nuts W/Lockwasher Part Number 9900-081, all included in the Kit.
6. Connect the two Terminal leads on the Harness Adapter, to the two electrical wiring harness leads, earlier removed from the old Overflow Switch.
7. Be sure the Overflow Switch Chain and Float hang freely, and that the Float hangs inside the Waste Pail.
8. Place the Main Switch in the ON Position.
9. Lift the Overflow Switch Float, a click should be heard from the Overflow Switch, and the SOLD OUT sign should be lighted.
10. Lower the Overflow Switch Float to hang inside the Waste Pail and observe that the SOLD OUT sign light should be OFF.

NOTE

For maximum benefits to the Operator and Serviceman, following the replacement of the Overflow Switch, use of the 30-Quart Waste Pail is recommended. Waste Pail Replacement Kit, Part Number 611-0031 contains the 30-Quart Waste Pail currently available. No Overflow Switch adjustment is required.

11. Close the Cabinet Door.

D. TO INSTALL THE OVERFLOW SWITCH REPLACEMENT KIT IN A CDM-72 AND CDM-72A.

1. Measure 10 inches down from the top of the Tank outer wall, and scribe two short reference lines along the left-hand edge of the wall: one at 8 inches and one at 10 inches. See Figure 6.
2. Position a ruler horizontally, from the line scribed at 10 inches through the center of the Screws attaching the Tube Retainer to the front wall; and, scribe a horizontal line 2-1/2 inches from the edge of the wall. See Figure 6.
3. Scribe a vertical line 2-1/2 inches from the edge of the wall. It should also be 2-1/2 inches from the center of the left Screw in the Tube Retainer, and intersect the horizontal line scribed in step 2. See Figure 6.
4. Measure 2 inches up from the intersecting point, of step 3, and scribe a horizontal line. See Figure 6.
5. Position a ruler horizontally, from the 8-inch reference line scribed in step 1, through the line scribed in step 4; and, scribe a vertical line 2-1/2 inches from the left-hand edge; then, a scribe a second vertical line 1-1/4 inches to the right. See Figure 6.
6. Centerpunch the three points of intersecting lines. See Figure 6.

WARNING

Be sure to read the Kit Installation Instructions carefully and completely before starting the Installation Procedures. Be sure to prepare and use the specified drilling equipment and prepared safety procedure. Use these precautions to prevent possibility of accidental drilling through the inner wall of the Water Bath Assembly, which would result in leakage problem.

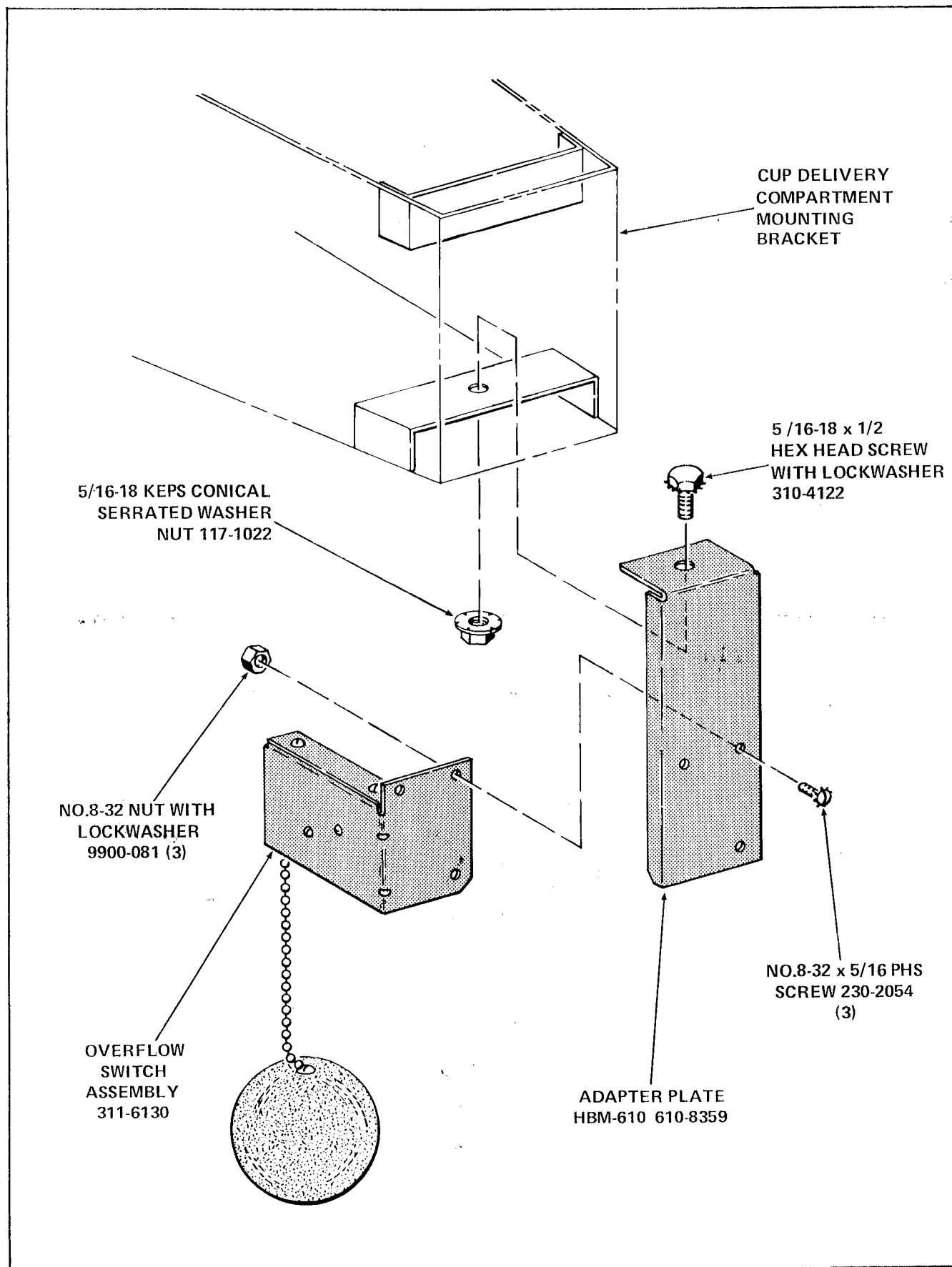


FIGURE 5

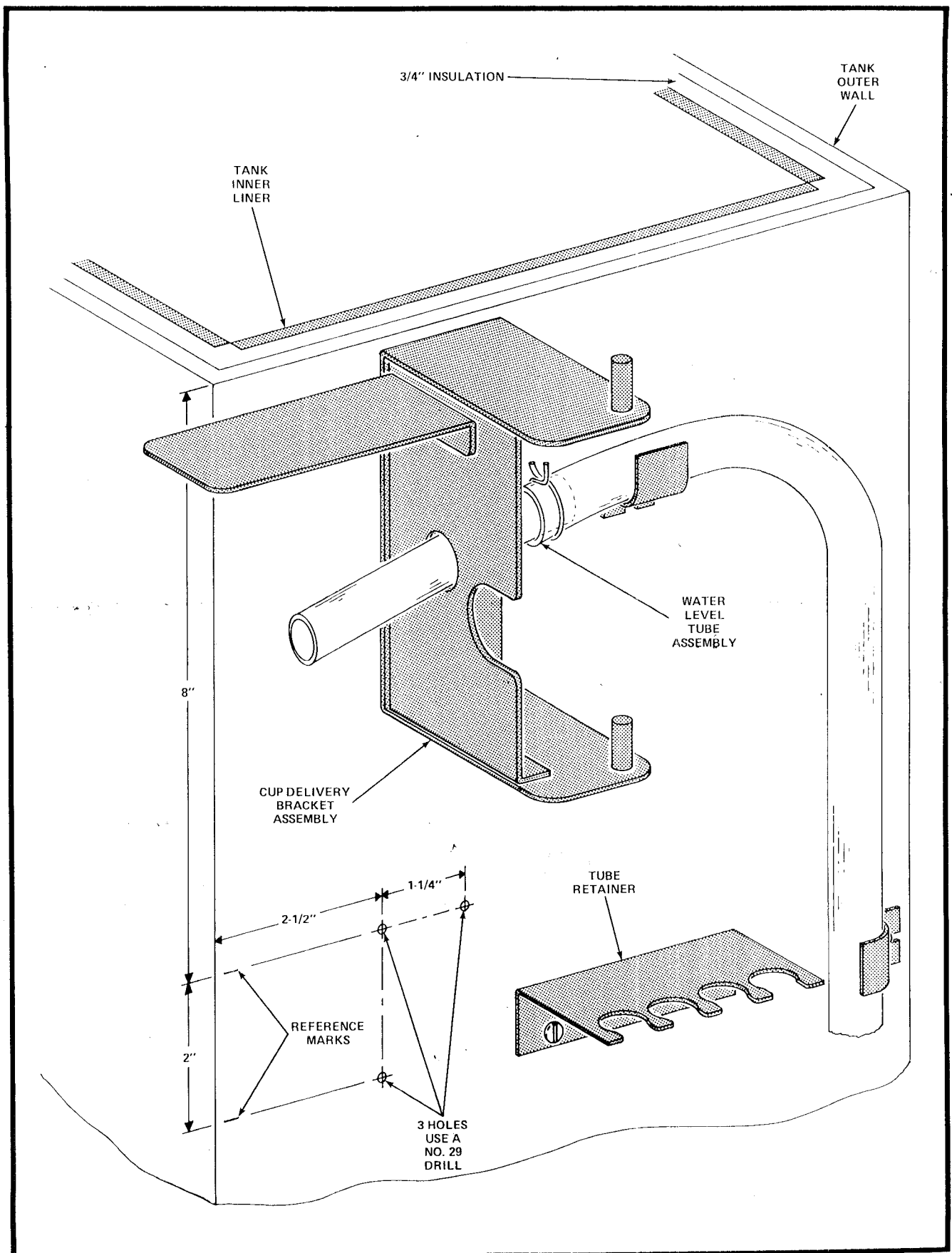


FIGURE 6

7. Install a No.29 (.136" Diameter) drill bit in a 1/4-inch drill chuck.
8. Place the Drill Depth Gage, Part Number 311-6145, included in the Kit, over the drill bit; and, adjust the drill bit to 1/4-inch MAXIMUM TIP EXTENSION BEYOND THE END of the Drill Depth Gage, and tighten the drill chuck.

WARNING

Be sure to use the Drill Depth Gage provided in the Kit. If your drill bit is too short, and will not extend out of the Gage, measure and cut the excess length off of the Gage, checking that the drill bit does not extend beyond the 1/4-inch maximum tip extension.

9. Carefully drill a hole through one of the centerpunched, scribed intersections, sensing when the drill has penetrated the Tank Outer Wall, and STOP. See WARNING Tag, Part Number 311-6144, included in the Kit.
10. Repeat step 9, for the two remaining centerpunched, scribed intersections.
11. Connect the 3-Circuit Switch Receptacle end of the Harness Adapter, Part Number 311-8050, included in the Kit, to the prongs of the Lever Switch on the Overflow Switch Assembly, Part Number 311-6130, included in the Kit. See Figure 4.
12. Install the Overflow Switch Cover, Part Number 311-6126, included in the Kit, on the Overflow Switch Assembly with two No.8-32 x 1/4 RHS S/T Screws, Part Number 9900-046, included in the Kit. See Figure 4.
13. Position the Overflow Switch Assembly, over the three holes drilled in steps 9 and 10, and attach using three No.8 x 3/8 PHS S/LW Sheet Metal Screws, Part Number 404-7057; included in the Kit. See Figure 4 and 6.
14. Connect the two Terminal leads on the Harness Adapter, to the two electrical wiring harness leads, earlier removed from the old Overflow Switch.
15. Be sure the Overflow Switch Chain and Float hang freely, and that the Float hangs inside the Waste Pail.
16. Place the Main Switch in the ON Position.
17. Lift the Overflow Switch Float, a click should be heard from the Overflow Switch, and the SOLD OUT sign should be lighted.
18. Lower the Overflow Switch Float to hang inside the Waste Pail and observe that the SOLD OUT sign light should be OFF.
19. Close the Cabinet Door.
20. Test vend the Merchandiser.